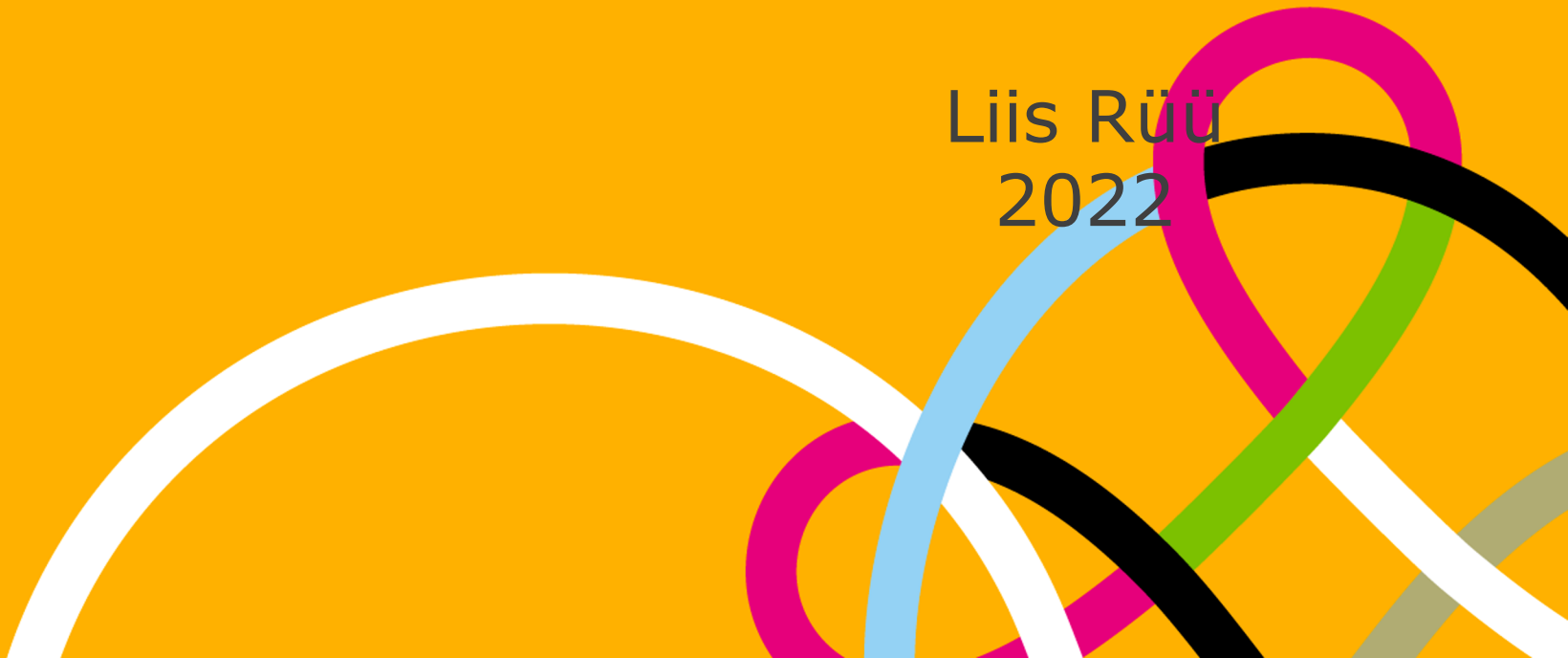




Haapsalu
Kutsehariduskeskus

Biodiversity and Travel

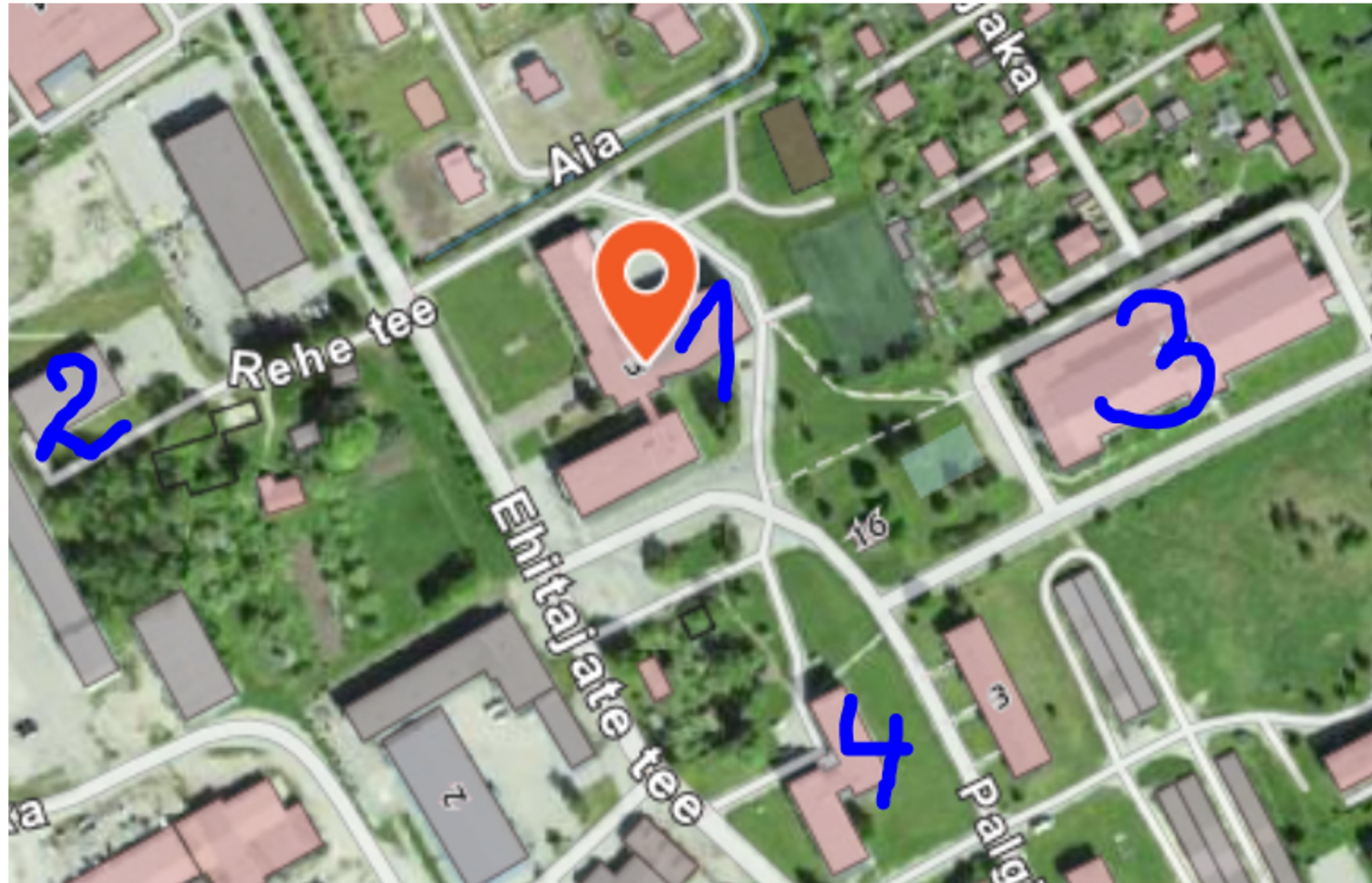
Liis Rüü
2022



Introduction

- of students, teachers, and workers.
- Biodiversity: permaculture, birdhouses.
- Who/what are supporting us?
- Future plans
- The biggest barrier(s) so far

School map



Important places nearby



Shop

Bus stop (helpful public infrastructure, for free)

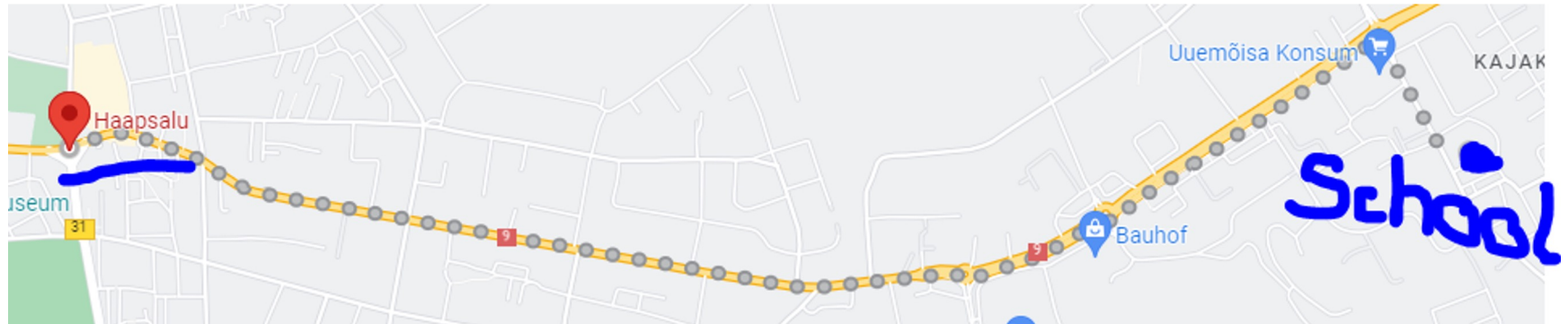
Teachers and students travel to school

School location

Teachers and students travel to school

Encourage to walk

Car share arrangements



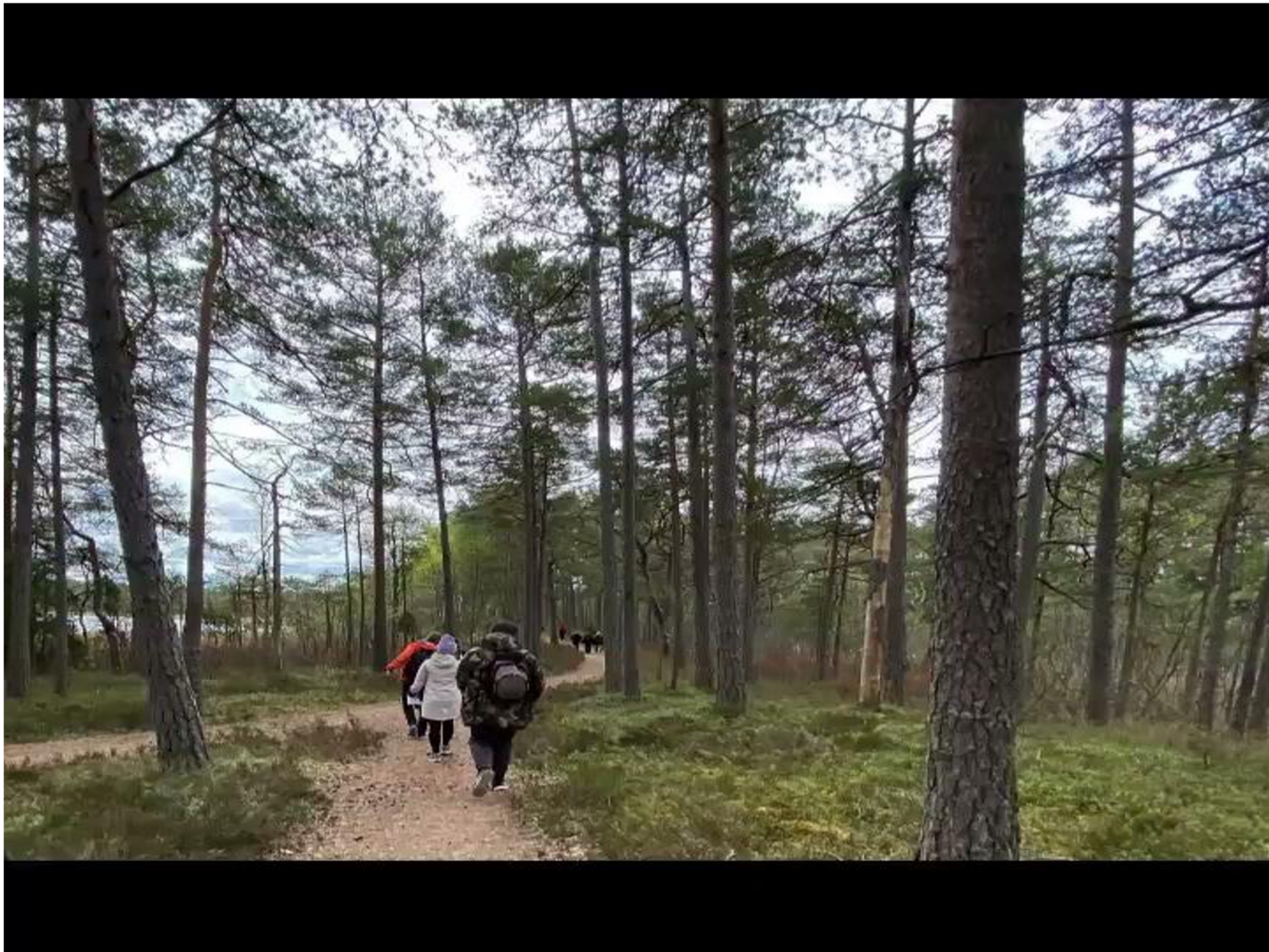
Bicycle facilities



Electric scooter



Hike in Spring



Biodiversity: Flower bed



Biodiversity: birdhouses



Support: teachers

Aile Nōupuu
Biodiversity:
[permaculture](#)



Marje Loide
Nature guide



Support: teachers

Marko Valker



- nature education specialist
- [Silma Nature School](#)
- mainly deals with birdwatching

Support: specialities

nature tourism - nature guide (regular education)
- bird guide (advanced education)

They are organizing/taking part:

- Guided walks/tours/excursions
- Picking mushrooms from forest
- Birdwatching tours
- [MAFF](#)
- [Nature Festival](#)

Ideas for future

- [RMK](#) tree planting “State forest as a carbon pantry.”
- Traditional event Community activities day
"Let's do it!" - World Clean Up day
(EST [Teeme ära](#) - [Maailmakoristus](#))

Ideas for future

- Integration of lessons (Science: biology + woodwork = making more birdhouses)
- raising awareness in this area (Nature Festival 2023 in Spring)

Barriers

- There is no bad weather; there is only the wrong outfit.
- You can't have two good things at the same time: flower bed and bike storage area.



Haapsalu
Kutsehariduskeskus

Thank you!

